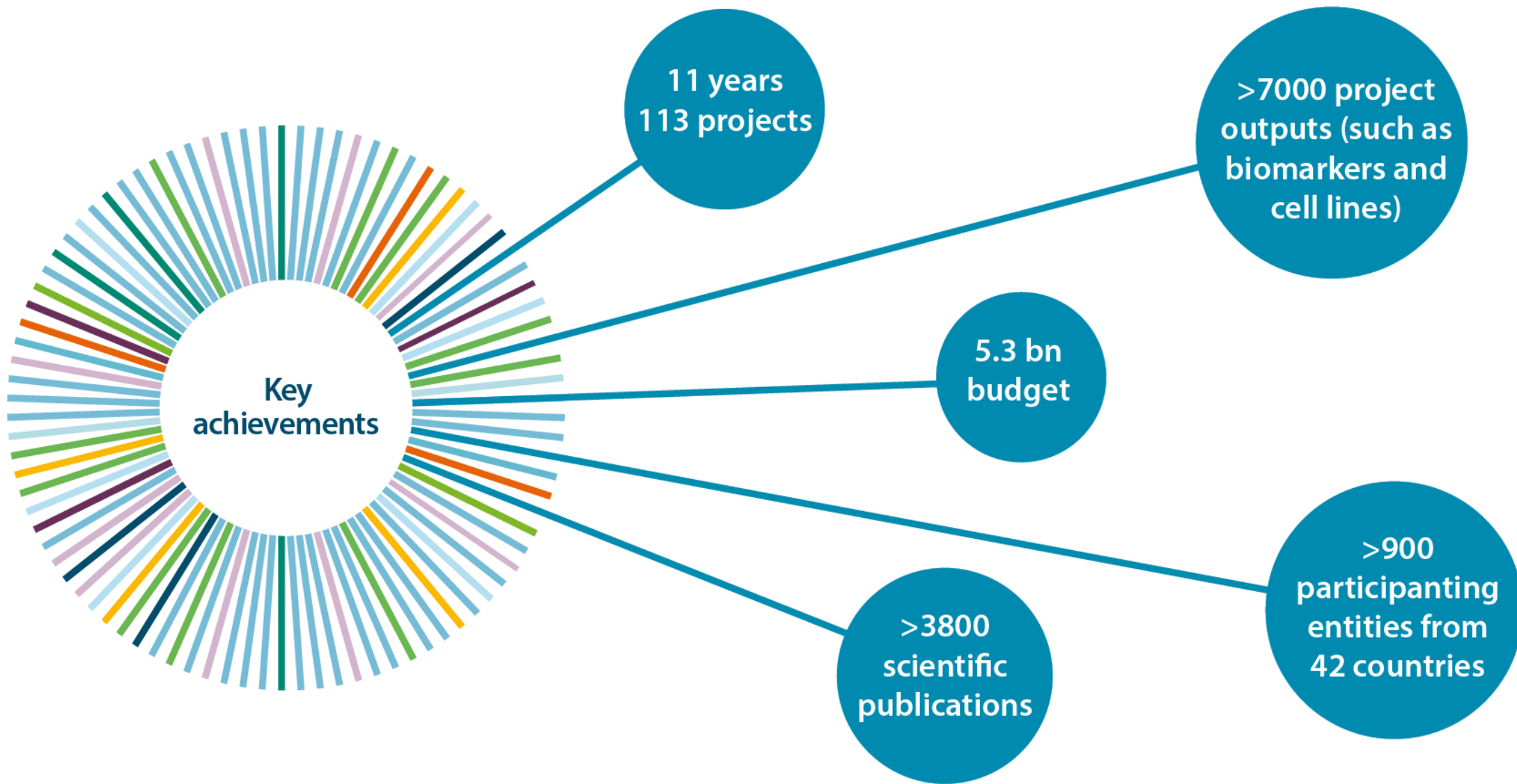




About IMI

IMI in a nutshell



IMI2 funding

IMI FUNDING MODEL

(2014-2020)

efpia

IN-KIND PRIVATE CONTRIBUTION

€1.425 bn

EFPIA companies receive no funding

€ 3.276 bn
TOTAL IMI2 BUDGET



public contribution
€1.638 bn

funding from Horizon 2020

EU funding goes to ▶

SMES

UNIVERSITIES

PATIENTS, REGULATORS...

OTHER CONTRIBUTIONS
€213 MILLION

(Associated Partners, e.g. charities, non-EFPIA companies)

EFPIA contribute researchers, laboratories, generation of data, curation of compounds, and cash

Public and private partners collaborate in IMI2 projects

Accelerating research and development

Speeding up patient access to innovative treatments

Improving patient outcomes and safety of medicines

Who is eligible for funding?

- Academic institutions
- Small & medium-sized enterprises (SMEs)
- Mid-sized enterprises (\leq €500m)
- Non-profit organisations e.g. research organisations, patient organisations, NGOs, public bodies, intergovernmental organisations etc.

Established in:

- **EU Member State**
- **Associated Country**

Other countries:

No funding unless participation deemed essential by IMI2 JU for carrying out the action

Art.1 Commission Delegated Regulation (EU) No 622/2014

How IMI Call topics are generated

1/3



How IMI Call topics are generated

2/3

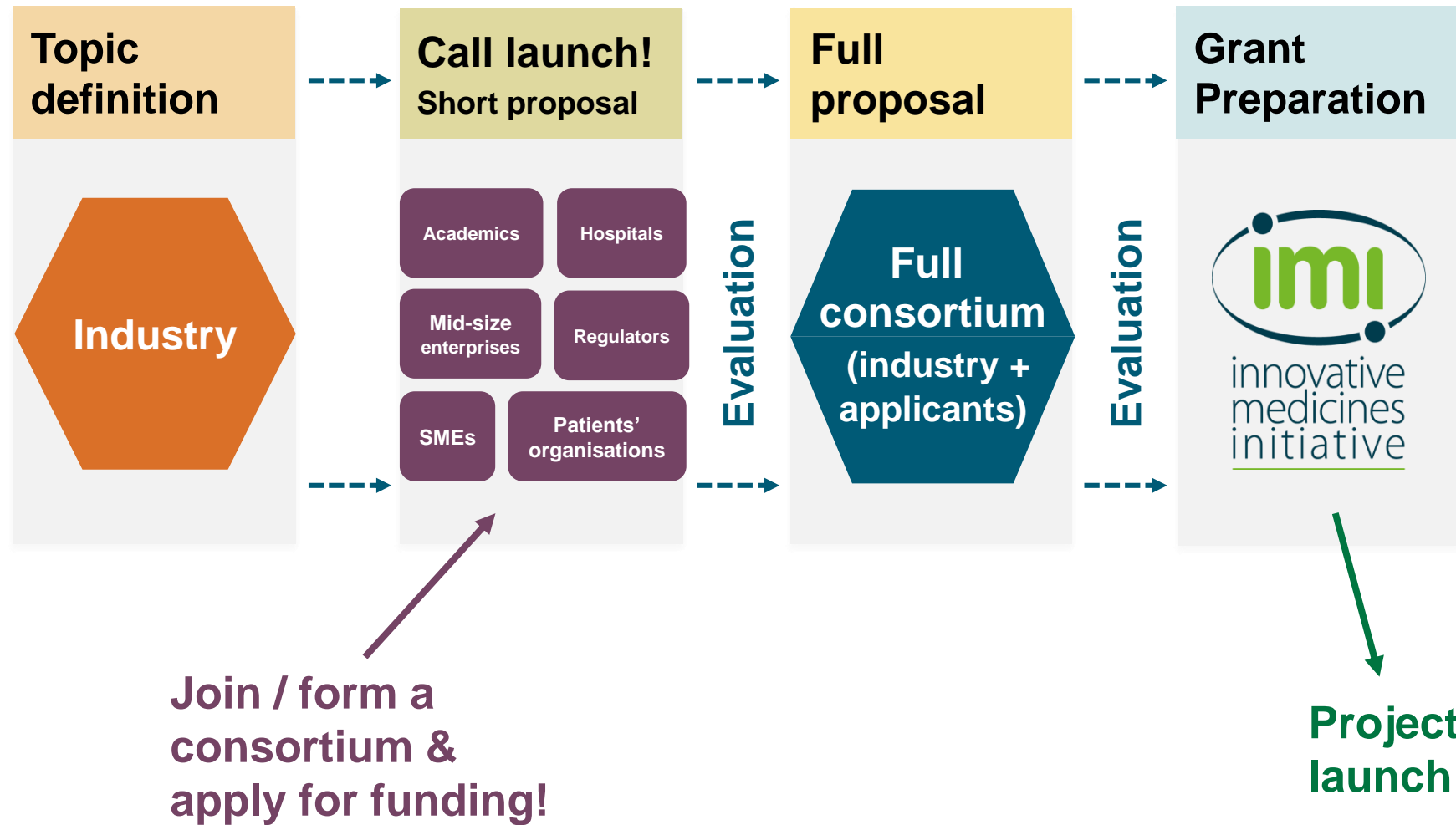


How IMI Call topics are generated

3/3



IMI's standard Call process



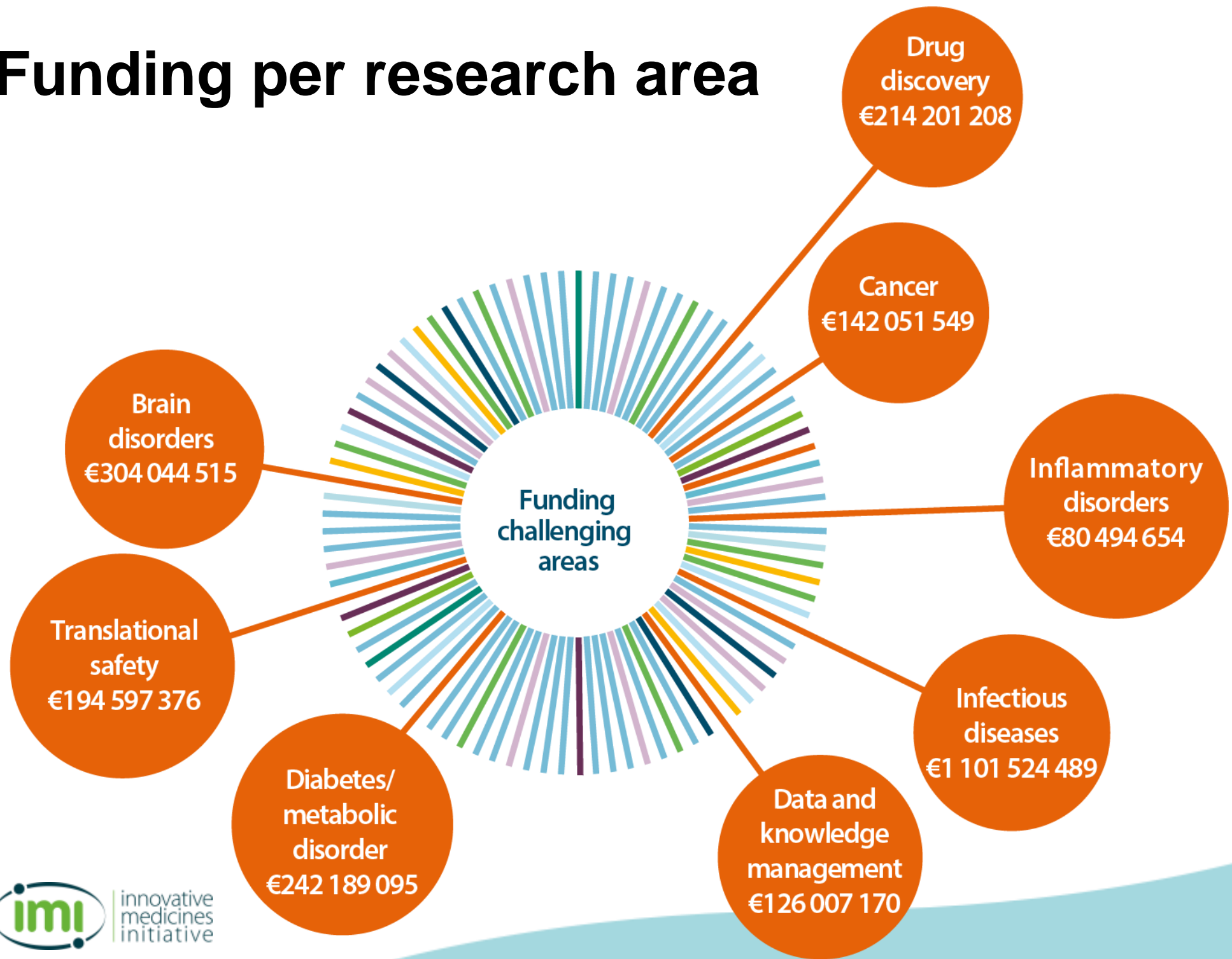
A single set of evaluation criteria



- Two-stage evaluation: all three criteria considered at both stages
- Thresholds and weighting in the **Call documents** depending two-stages/single stage
- Minimum of **3 independent experts**

Each proposal **evaluated 'as it is'**, not as 'what could be'.

Funding per research area



IMI2 – Call 18 and 19 – indicative topics

Scheduled launch date: **26 June 2019**

More info:
bit.ly/FutureTopics

Topics Call 18:

- Central repository of digital pathology slides
- Health Outcomes Observatories – empower patients with tools to measure their outcomes in a standardised manner
- E-Health information: improving patient access, understanding and adherence to healthcare information:
- Establishing quality of life endpoints in oncology
- Accelerating research & development for advanced therapy medicinal products
- Supporting the development of chimeric antigen receptor T cells

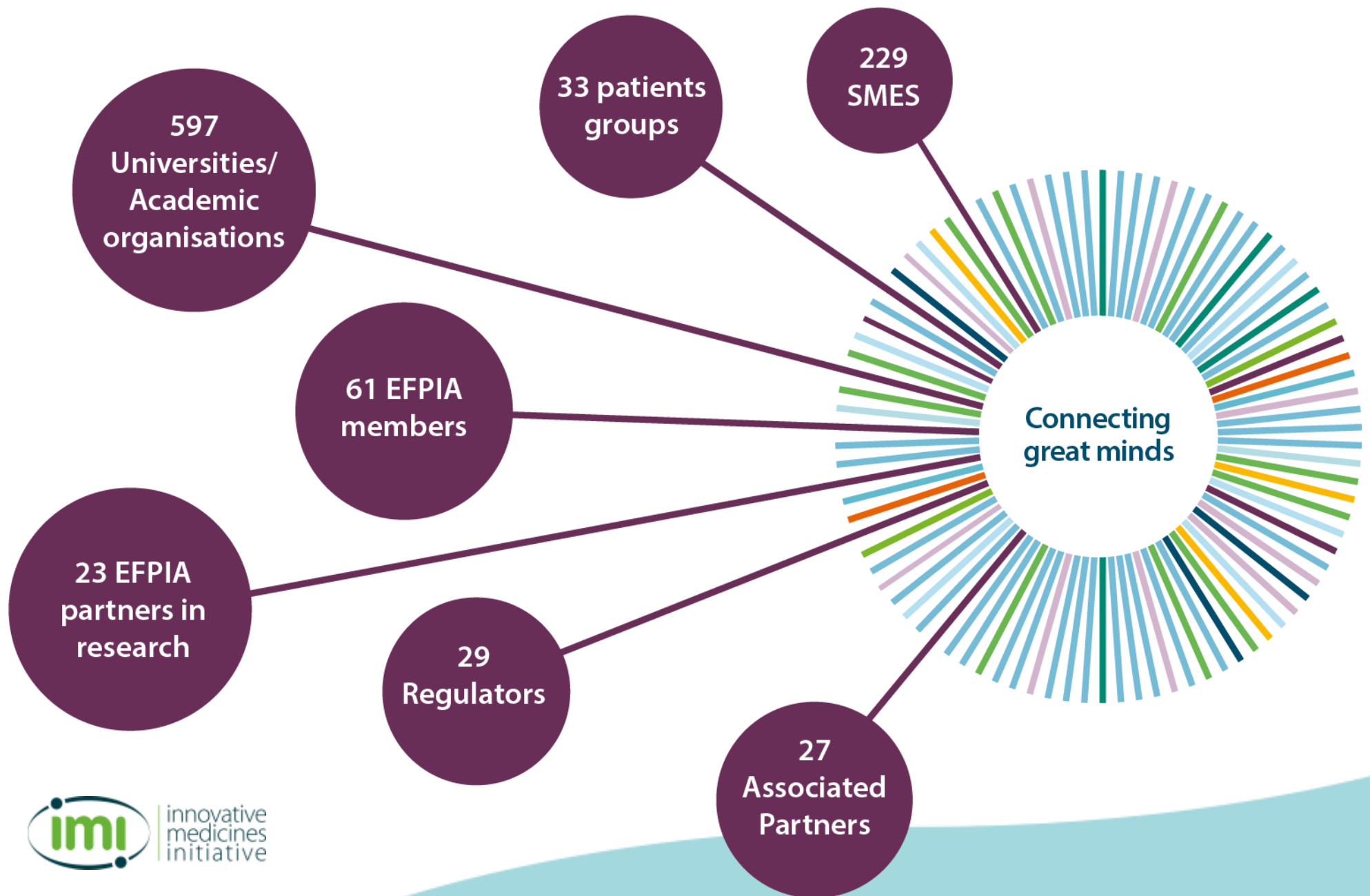
Call 19. restricted call to maximise impact of IMI2 JU objectives and scientific priorities

Topics in the long term pipeline

What?	Titles & short summaries for long-term future Calls (i.e. several months away)
Where?	IMI Future Topics page bit.ly/FutureTopics
Why?	<ul style="list-style-type: none">▪ give potential applicants a glimpse into what is under development in the longer term▪ provide additional time to enhance networks
Important note!	Discussions on these topics are still in their early stages. They are likely to change considerably. Some topics may be dropped (but new ones may be added to the list).

All information regarding future IMI Call topics is indicative and subject to change. Final information about future IMI Calls will be communicated after approval by the IMI Governing Board.

The IMI community



What does an IMI project look like?



HARMONY
Healthcare Alliance for Resourceful Medicines
Offensive against Neoplasms in Hematology

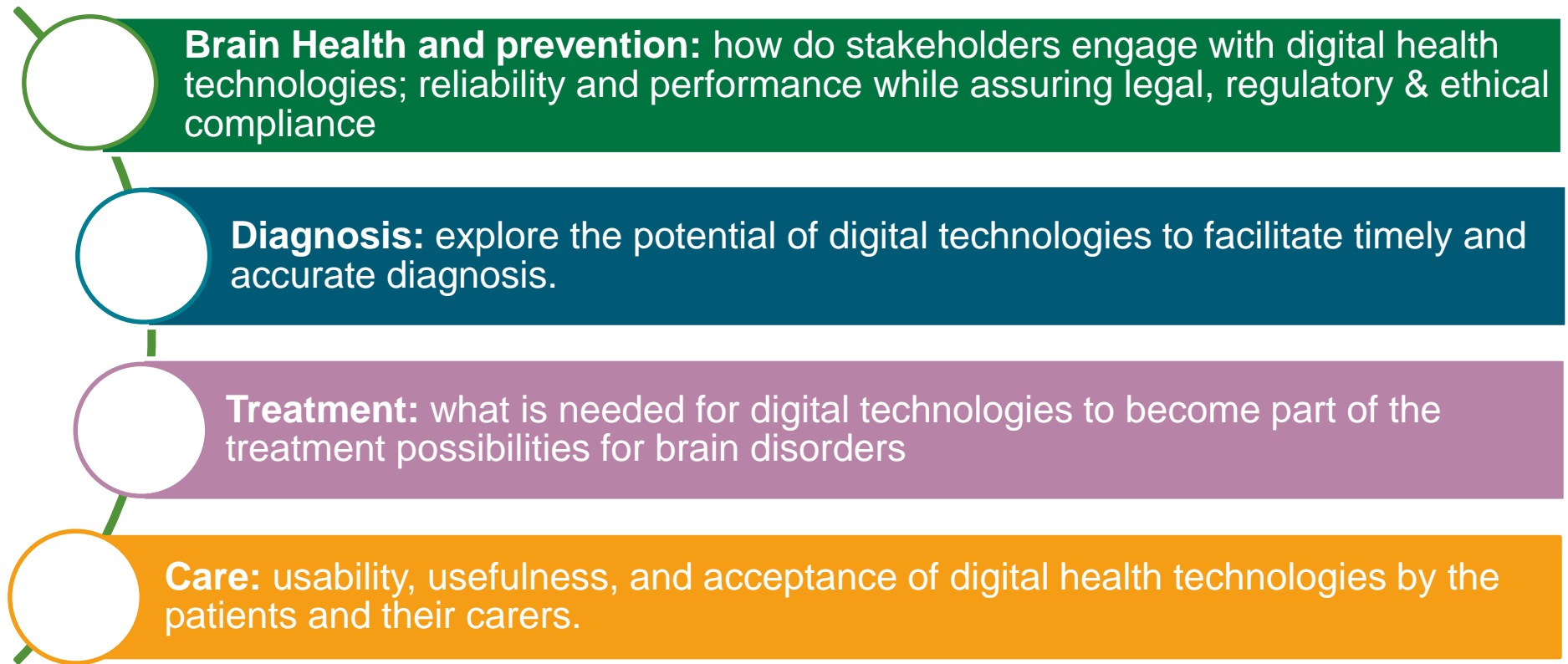



53 organisations from 11 countries, working across 7 hematological malignancies

Stakeholder Forum 2019 “Brain health and disease in the digital era - 2020 & beyond”

Wednesday 12 June at Royal Museum of Fine Arts of Belgium

Built around 4 sessions following the patient’s path from prevention to care



Your contact points

At the IMI Programme Office

- General queries: applicants@imi.europa.eu
- IP queries: IMI-IP-Helpdesk@imi.europa.eu

Local contacts

- IMI2 JU States Representatives Group: bit.ly/IMISRG
- Horizon 2020 Health National Contact Points: bit.ly/H2020_NCPs