

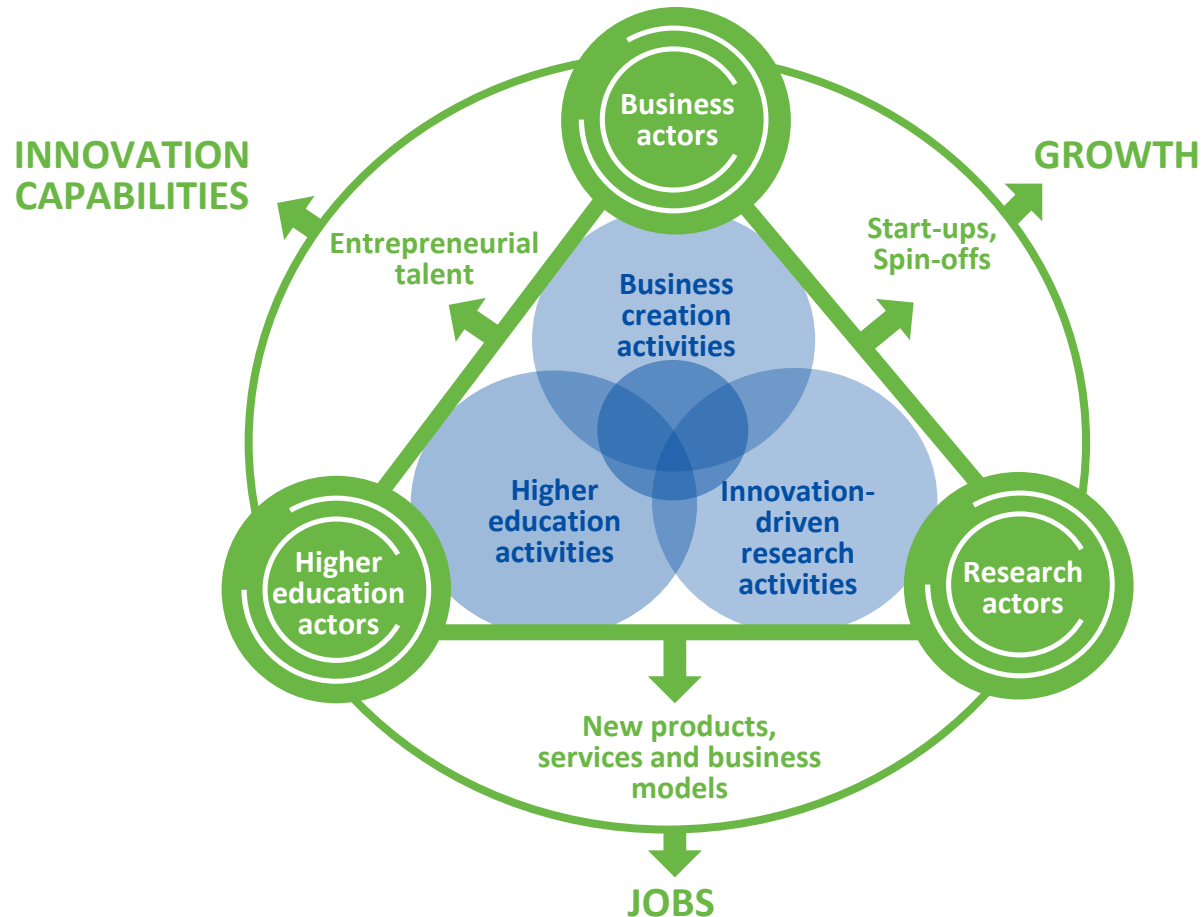


European Institute of Innovation and Technology (EIT)



*gauthier.grousset@ec.europa.eu
European Commission
DG Education and Culture*

European Institute of Innovation and Technology



Societal Challenges

From student to
entrepreneur

From idea to
product

From lab to
customer

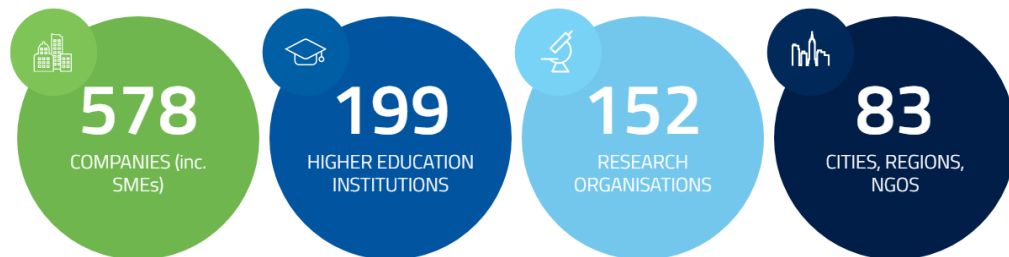
EIT Knowledge and Innovation Communities



European Institute of
Innovation & Technology

The KIC model: *A business logic*

- ✓ **High degree of integration:** each KIC is an independent legal entity, gathering partners from across the knowledge triangle based on a contractual partnership with the EIT.
- ✓ **Long-term strategic approach:** each KIC is set up for a minimum of 7 years to eventually become sustainable.
- ✓ **Autonomy and flexibility:** to determine organisational structure and activities, governed by a Board of KIC partner organisations.
- ✓ **The co-location model:** each KIC consists of a number of innovation hotspots building and leveraging on local capacities (5-9 per KIC).
- ✓ **Results & high impact oriented activities:** 7 year Strategy and Annual Business Plan
- ✓ **Culture:** shaped by strong entrepreneurial mind-sets, and culture
- ✓ **Synergies & complementarities:** at national, European and international level

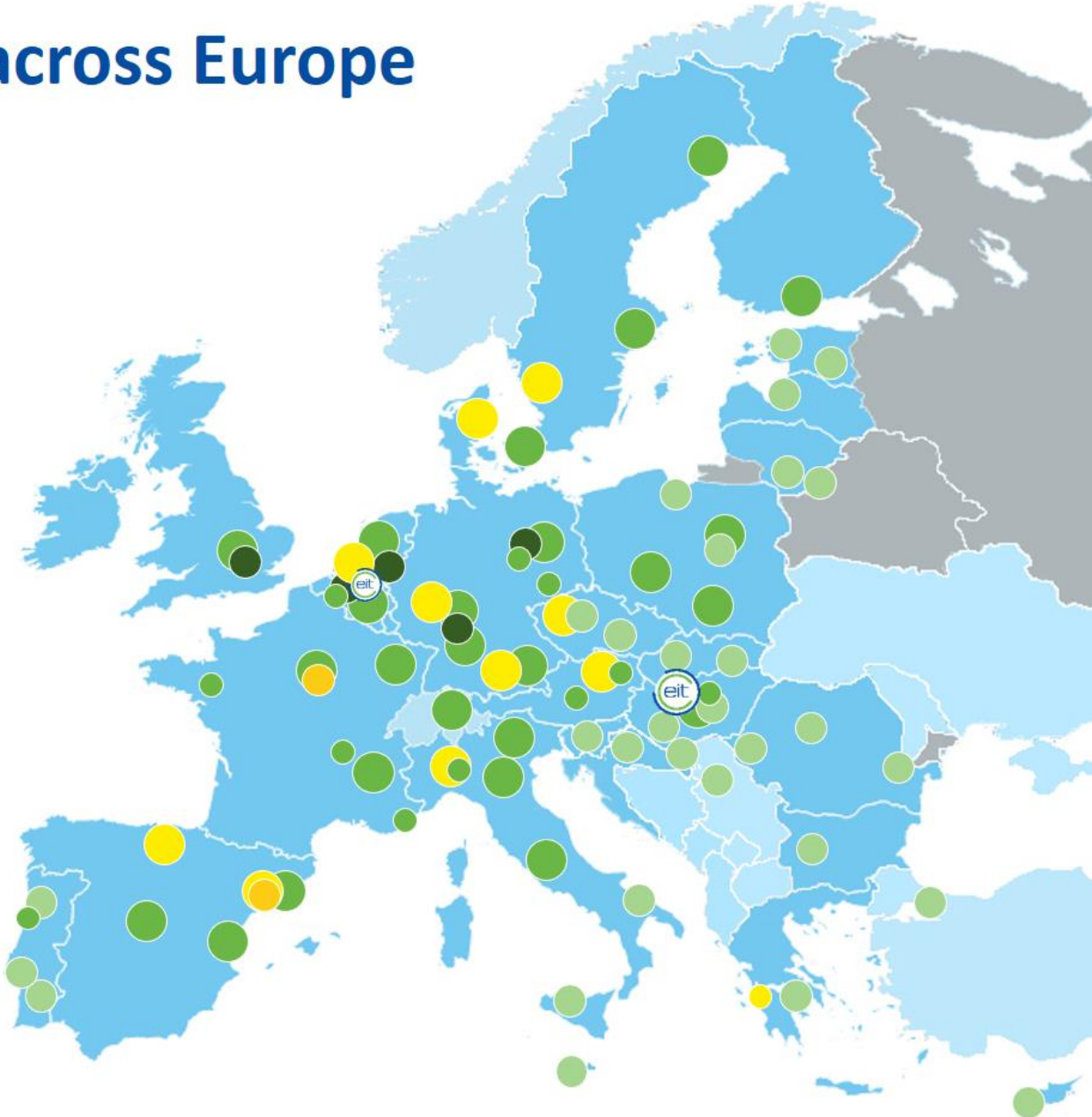


EIT Community across Europe

- Headquarters
- Innovation Hubs
- Offices
- EIT RIS Hubs

Newly selected Innovation Communities

- Headquarters
- Innovation Hubs
- Offices

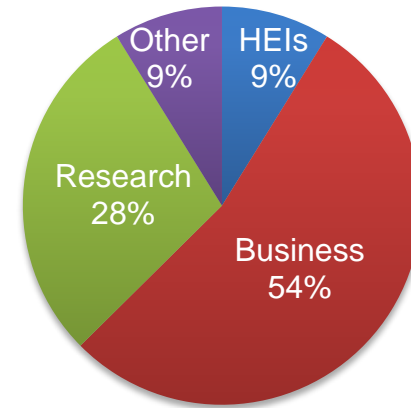


European Institute of
Innovation & Technology

The EIT in Spain

- In 2017, Spanish organizations received over **€ 20 million** of EIT funding
- **147 participating organizations** (3rd largest)
- 11% of all EIT participating organizations are Spanish
- From 2014 to 2017, Spanish organizations received more than **63 million € in EIT funding**.
- **Co-locations centers**
 - EIT Climate-KIC in Valencia
 - EIT Digital and EIT Food in Madrid
 - EIT Health and EIT InnoEnergy in Barcelona (and soon EIT Urban Mobility)
 - EIT Manufacturing in Bilbao (soon)

Participating organisations



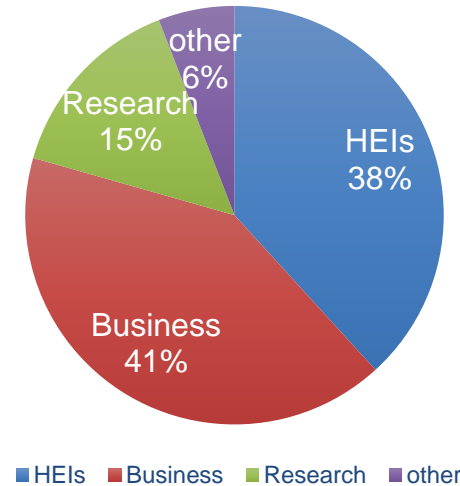
■ HEIs ■ Business ■ Research ■ Other

Participating Universities: Pol. Madrid, Pol. Catalunya, Pol. Valencia, Madrid, Barcelona, Alicante, Navarra, Valencia, Huelva, CEU Cardenal Herrera, etc.

The EIT in Portugal

- In 2017, Portuguese organizations received almost **€ 4 million** of EIT funding
- **34 participating organizations**
- From 2014 to 2017, Portuguese organizations received more than **9 million € in EIT funding.**
- **KIC offices**
 - EIT Digital satellite in Braga

Participating organisations



Participating Universities: Porto, Evora, Coimbra, Lisbon, FCT Lisbon, Instituto Superior Tecnico, ISCTE-IUL, etc.

Education Activities



Educating the next generation of entrepreneurs, innovators & change-makers

Key Characteristics:

- Linking education, research and business
- Learning by doing curricula and robust entrepreneurship education
- International, inter-organisational and cross-sectorial mobility

EIT Education Portfolio:



Master programmes

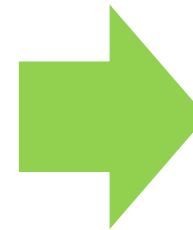
- International cooperation and industry involvement
- Mobility, internships and scholarships/ fellowships

Doctoral programmes and schools

- Training on specific skills and competences
- Mobility, internships and scholarships/ fellowships

Executive training & post-doctoral courses

- Continuous professional development courses (e.g. Climate-KIC Pioneers, Catalyst, Spotlight; EIT Health Campus Training for Professionals)
- Learning modules and MOOCs



EIT Label
A certificate of quality



European Commission | Education and Culture

Innovation Activities

- ✓ Support for finalising and commercialising technological innovations
- ✓ Aim is to develop products/services that address a specific business opportunity.
- ✓ Support is offered to consortia and to individual innovators.
- ✓ Funding to demonstrators, pilots, proofs of concept, etc.



Transdisciplinary & multicultural teams working together on global challenges

New products, services, processes & business models for Europe

Entrepreneurship Activities

- ✓ Range of business support services to help entrepreneurs translate their ideas into successful businesses.
- ✓ Services focus on areas such as support for technology, market assessment, access to human resources, seed and venture capital.
- ✓ Activities include business plan competitions, pre-incubation and incubation services, access to trainings, support to scaling-up.



FAST-TRACK YOUR CLEANTECH BUSINESS

**ENTER CLIMATE-KIC
ACCELERATOR**

JOIN NOW!

Stage 1: Fundamentals

- Find your market niche, develop a financial model and figure out how to make money and scale your business. Depending on where you follow this program, this stage comes with a grant of up to € 20,000*.

Stage 2: Validation

- Are you solving real customer problems? Talk to customers and verify your business assumptions. The grants in Stage 2 are meant to cover your travel costs and could add up to € 25,000*.

Stage 3: Delivery

- Get your business ready for take-off. Find launching customers, development partners or investors. Form partnerships that make you grow fast. This final stage, you may get up to € 50,000.



European
Commission | Education
and Culture

EIT Results

Europe's one-stop shop for innovation



40+

Innovation Hubs
across Europe



1 250+

Ventures
supported



890M+€

Investment raised
by EIT ventures



6 100+

Jobs created



600+

New products
and services



1 700+

Graduates
completing EIT
programmes

*figures July 2018



European Institute of
Innovation & Technology



European
Commission

Outlook to the future



HORIZON 2020

Horizon Europe: evolution not revolution

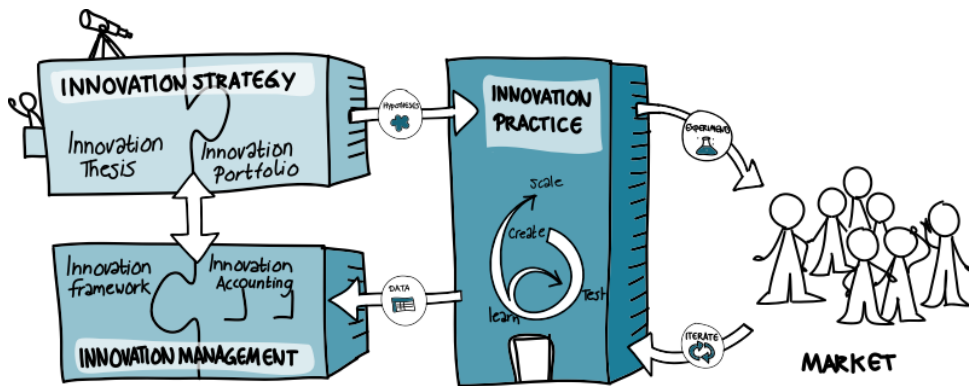
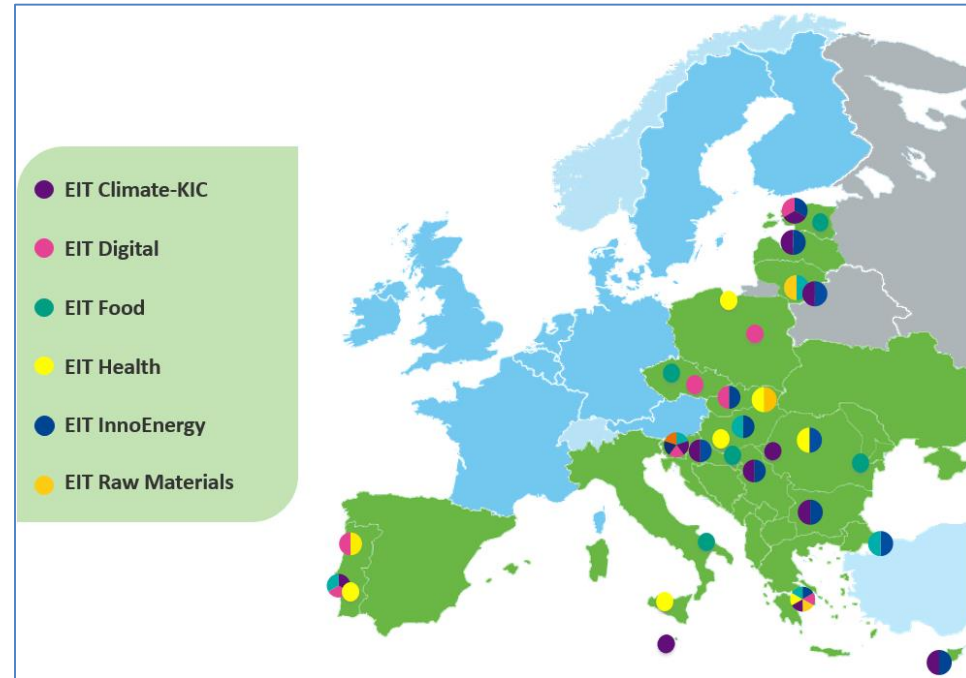
Specific objectives of the Programme



Proposed budget of EUR 3 billion
25% increase compared to H2020

EIT: what's new

Reinforce and expand the EIT RIS (Regional Innovation Scheme) to drive regions where innovation is modest or moderate towards excellence



Support the development of innovation and entrepreneurship capabilities of the higher education sector

EIT: expected impacts

- **Better integration of education, research, business and entrepreneurship** for better delivery on EU strategic priorities
- Strengthened **innovation ecosystems** that address global challenges
- **Reinforced R&I capacity in regions** with modest or moderate innovation activity through innovation hubs, co-location centers, their activities and networking
- **Transformation of universities** across the EU (more entrepreneurial, collaborative; with advanced digital and innovation skills; non-disciplinary collaborations between industry and academia)



Thank you



eit.europa.eu

 @EITeu

 EITnews

 EIT

HORIZON 2020